

# Willow

# Green

# Education

# Prospectus



# Contents

<b>About us</b>	<b>Page 2</b>
<b>Our curriculum</b>	<b>Page 3</b>
<b>On the right path</b>	<b>Page 4</b>
<b>Our internship roadmap</b>	<b>Page 5</b>
<b>Developing skills for the future</b>	<b>Page 6</b>
<b>Person-centred approach</b>	<b>Page 7</b>
<b>Supporting our learners</b>	<b>Page 8</b>
<b>It's all about experience</b>	<b>Page 9</b>
<b>The referrals process</b>	<b>Page 10</b>
<b>Our term dates for 2025/2026</b>	<b>Page 11</b>

# About us

## What we do

Willow Green is a specialist independent college providing education and adult social care programmes for 16–25-year-olds with special educational needs and/or disabilities.

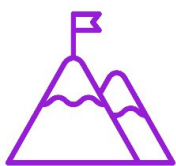
Each education pathway focuses on preparing learners for work through either a Pre-Supported or Supported Internship. Places on our education pathways are funded through the Education and Skills Funding Agency via high needs funding. As such, learners require a current Education, Health and Care Plan to access these.

## Our vision

Our vision is to empower our learners to participate fully in society as independent, mature and responsible individuals.

Our evidence-informed education pathways provide practical, knowledge-rich curriculums that enable learners to remember more, apply more and achieve more.

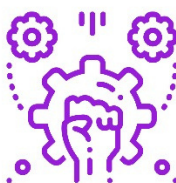
## Our values



**Ambitious**



**Supportive**



**Empowering**



**Nurturing**

# Our curriculum

## Pre-Supported and Supported Internships

Internships are further education courses to help young adults with Special Educational Needs and Disabilities (SEND) who “want to move into employment and need extra support to do so”.

### Pre-Supported Internship

**3 days** in college  
**2 days** work experience

per week, supported by a qualified job coach

### Supported Internship

**2 days** in college  
**3 days** work experience

per week, supported by a qualified job coach

### What are the benefits?

- Personalised training programme
- Learn English, maths and ICT skills
- A real possibility of a paid job at the end of the internship
- Employer and job coach working closely with you
- Work experience with a range of employers – learning on the job

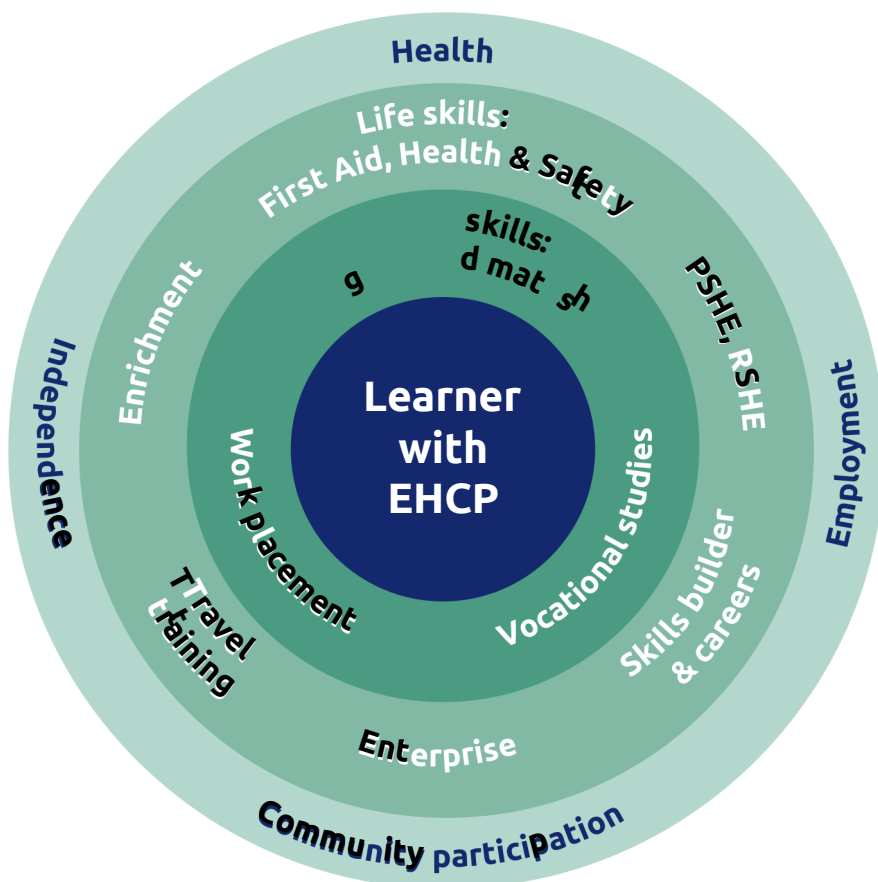


# On the right path

**We believe that every young adult with Special Educational Needs and/or Disabilities (SEND) has the right to access high-quality education, training, and social support.**

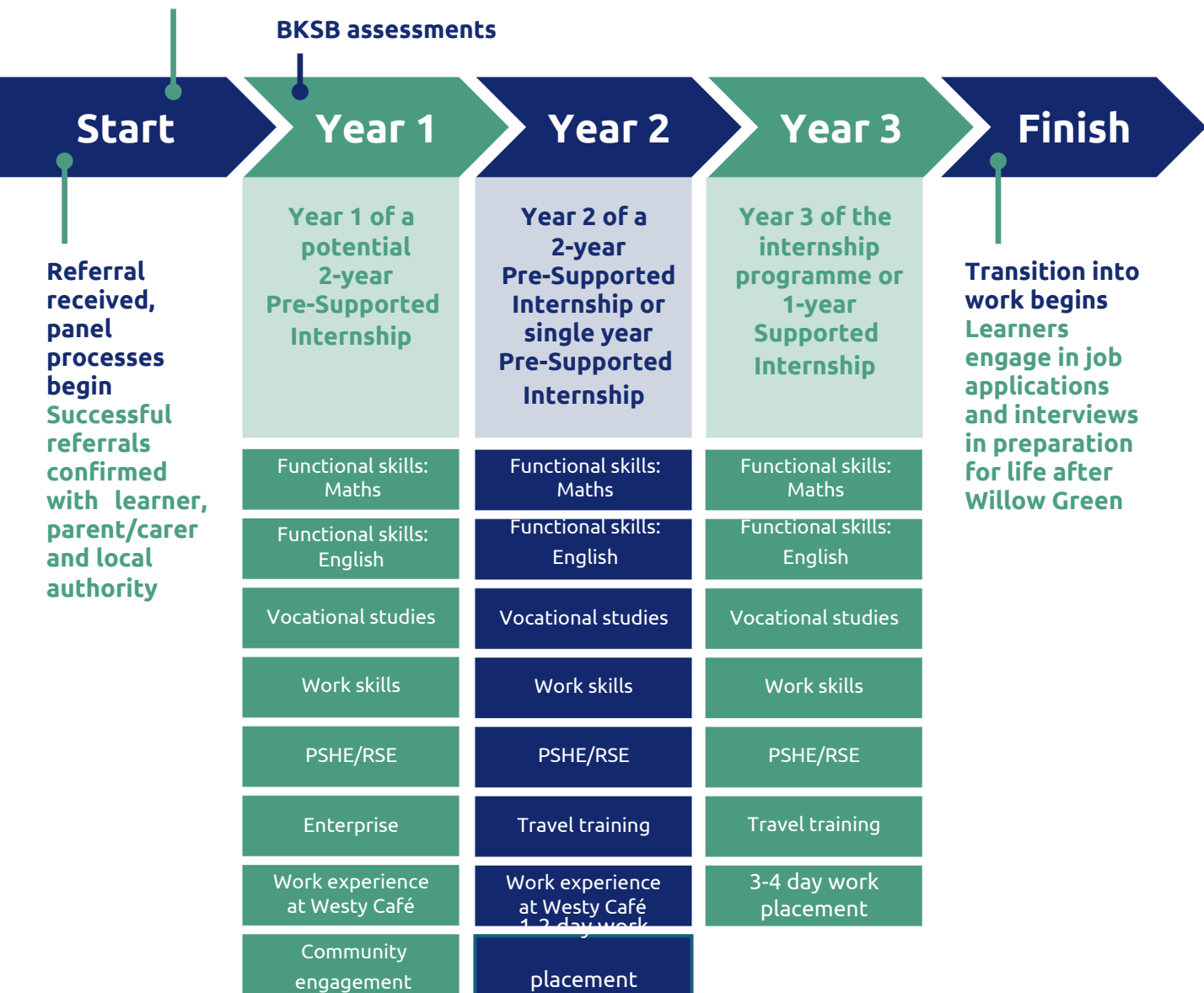
That's why we've designed our pathways to be adaptable and allow our learners to reach their full potential. Our learners are at the heart of their learning, with qualified teachers and job coaches guiding them through their journey as they develop lifelong skills, preparing them for employment.

Personal safety and wellbeing is embedded throughout all we do. Whether you're applying through Adult Social Care or Education, there'll be a route for everyone. Which route learners take will depend on their age, prior learning experience and career aspirations. We provide a one, two or three-year education pathway with EHC plan targets and aspirations remaining central to their programme.



# Our internship roadmap

Transition begins  
Length is learner-specific;  
we aim for completion in 4 weeks



## TIMETABLE

### Yr 1 Pre-Supported Internships

Monday, Tuesday, Wednesday, Friday: college  
Thursday: work placement @ Café

### Yr2 Pre-Supported Internships

Tuesday, Wednesday, Thursday: college  
Monday, Friday: work placement

### Supported Internships

Wednesday, Thursday: college  
Monday, Tuesday, Friday: work placement

Start time  
09.30  
Finish time  
16.00–16.30

# Developing skills for the future

**Alongside studying core skills including English and maths, through vocational training our learners can learn other valuable life skills too.**

We're proud to develop our learners in other areas, including:

- Interaction and communication
- Independence through travel training
- Money management
- Digital skills
- Support with their social, emotional and mental health

Our learners are also taught self-control, self-advocacy, building resilience and personal effectiveness. All skills lead to effective communication and greater independence.



Thank you so much, you are such an amazing role model for my son and all the students you teach. To say we are absolutely thrilled by how much he has come on is an understatement – you and the staff of Willow Green are fantastic and make such a huge difference to the young adults you support.

Parent comment,  
2024

# Person-centred approach

**Our learners are at the heart. Our skilled team at Willow Green will be with learners every step of the way.**

We have experts in education, safeguarding, therapies and behaviour and meet regularly to discuss, write and review all plans to support the individuals with us. But it's not just about our experts, it's all about our learners too. We ensure they are involved in every step of the way, including setting and reviewing targets.

Our learners' ambitions are listened to, and we ensure they are brought to life through work placements and study. We also welcome the support of external experts and invite families and carers to ensure their views and opinions can be heard.



# Supporting our learners

**We follow the tiered Positive Behaviour Support (PBS) approach to cater to the individual needs of each young adult.**

This is reinforced through our own therapeutic 'areas of support' pyramid and is an integral part of what we offer, allowing us to provide the right support to those who need it the most.

**Intensive support out of or in the classroom environment to help manage independence and personal support.  
Needing 1:1 or high levels of support in order to access Willow Green.**

**Intensive**

**Additional support above that provided at a universal level.  
This can be a classroom setting as a whole group or smaller, more bespoke groups and pairs.**

**Comprehensive**

**These are strategies and support that ALL clients and learners at Willow Green receive. regardless of their ability, disability or diagnosis.**

**Universal**

# It's all about experience

**Vocational profiling, job coaching, work placements are part of our education offering.**

Our learners gain practical experience in the workplace with employers such as Gulliver's World, LiveWire, Westy Café and We Care UK. Other employers can also be contacted to arrange internships based on the employment aspirations of each learner.

In addition to the work experience all learners will:

- Develop a vocational profile to determine their most appropriate career path
- Have an impartial advice and guidance session with an Independent Careers Counsellor
- Produce a curriculum vitae
- Undertake practice job interviews
- Complete independent travel training

“

Staff pay high priority to learners' well-being and to how they can keep themselves safe and healthy. Learners value the education they receive in the supportive and welcoming college environment

Ofsted, 2024



# The referrals process

- Expression of interest received.
- Site visit arranged.
- Application sent home.

- Learner application is received.
- Willow Green alert current setting/ school and Local Authority.
- EHCP requested from Local Authority.
- Referral documents shared with panel, internal MDT meeting held.

- Outcome of panel shared with Internships teacher.
- Teacher and Therapy Practitioner carry out visit at home/ current setting.
- Final decision based on Willow Greens' ability to meet individual needs is made.

- Expression of interest shared with learner, parent/ carer.
- Local Authority notified of provisional place - letter issued to SEND case worker.
- Learner is invited for Initial Assessment.

- Assessment report written.
- 'All about me' interview held with learner - Learner passport created and vocational profile created.

- Assessment submitted to Local Authority alongside funding application.
- Place accepted at Willow Green pending Local Authority agreement

- Learner and parent/carer informed in writing.

- Transition plan created, shared and distributed.
- Transition visit(s) to take place April - July.

**Job coach assigned and work placement procured**



**Willow Green CIO** St Werburgh's  
Development Centre Irwell Road  
Warrington

WA4 6DQ

01925 698 519  
[info@willowgreencio.co.uk](mailto:info@willowgreencio.co.uk)  
[willowgreencio.co.uk](http://willowgreencio.co.uk)